



SPRINGSAVER 50 RAIN BARREL

WITH SPACE SAVING FLAT BACK DESIGN

The SpringSaver Rain Barrel provides great functionality with dual spigot access ports and overflow. The compact design requires minimal set up area and provides for easy transportation and includes a space saving flat back design to hug walls.



CORROSION PROOF INTAKE SCREEN

Screened intake filters organic debris and prevents insect entry.

OVERFLOW CHANNEL

Recessed top and overflow channel prevents splashing/spilling and manages flash storms by pushing excess water away from foundation.

UV PROTECTION

Molded with 10 year UV-protected polyethylene plastic.

THREADED SPIGOT WITH TWO ACCESS POINTS

Enables hose attachment and access to entire water supply.

SPRINGSAVER COLOR SELECTION

Beige

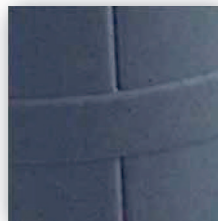
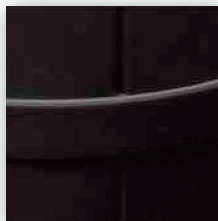
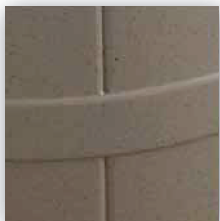
Black

Deep Green

Gray

Oak Wood

Terra Cotta



TO ORDER: **\$64.99**
CITYRAINBARRELPROGRAM.ORG