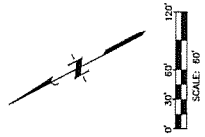


BENCHMARK A
TEMPORARY BENCHMARK IS A COTTON ON THE SOUTH SIDE OF GRAND AVENUE PARKWAY, 20 FEET NORTH-EAST OF A PROPERTY CORNER INTERSECTING CAMERINA TRAIL AND GRAND AVENUE PARKWAY (ELEVATION=874.79) (NAVD 88 DATUM)

LEGEND
0 0 0 0 0 0 0 0 0
EXISTING GRADE CONTOUR
D D D D D D D D D D
DRAINAGE
BLACK
BLOCK



NOTE:
A 10' ELECTRIC AND TELECOMMUNICATIONS EASEMENT IS REQUIRED ALONG ALL INTERIOR ROADS.

TABLE 1

AREA	TOTAL ACRES	REMARKS
Subdivision	18.5	
Open Space	18.5	
Other	0	
Total	18.5	

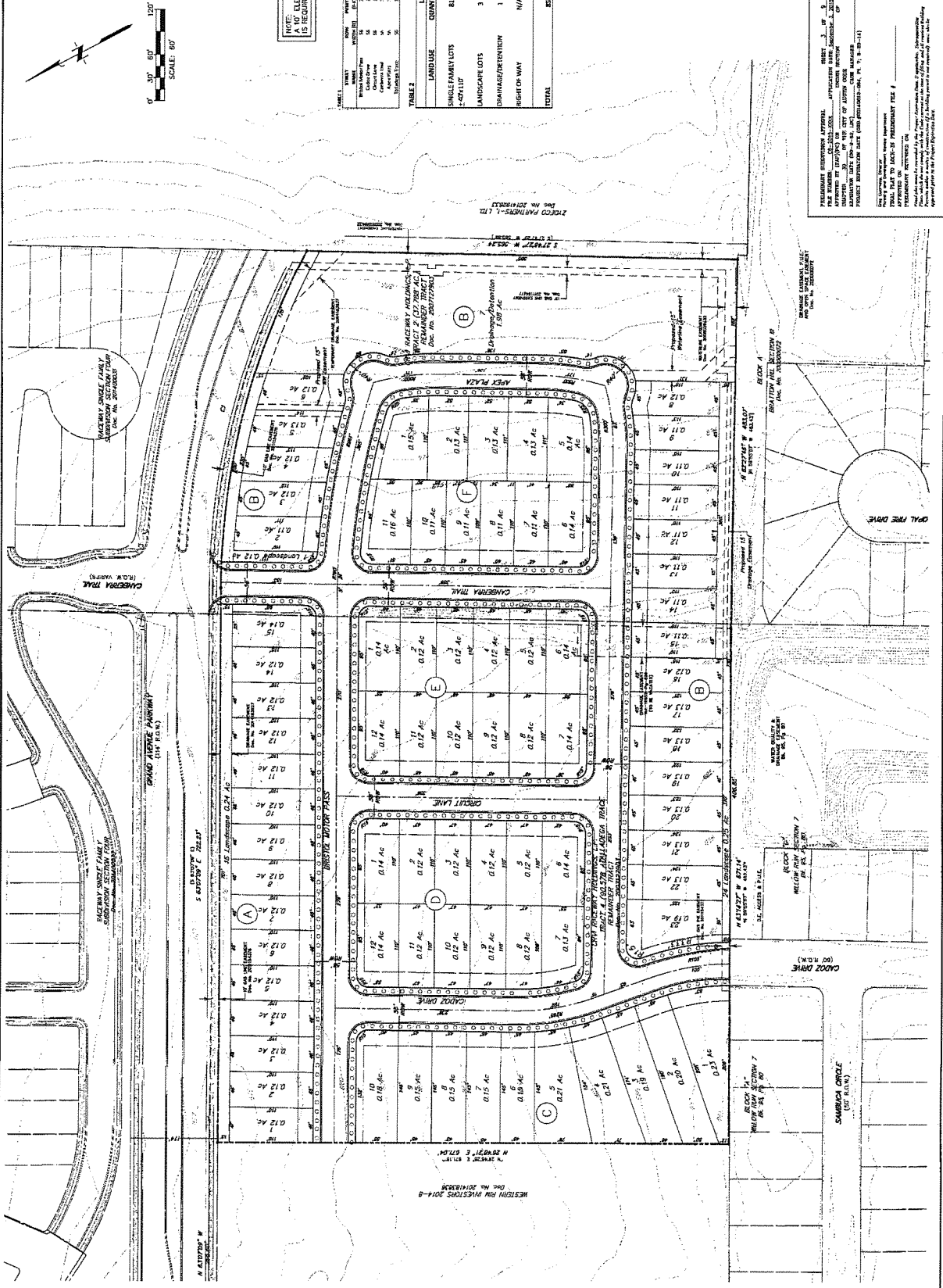
TABLE 2

LAND USE	QUANTITY	DENSITY	INTENSITY	ACREAGE
RESIDENTIAL SINGLE-FAMILY UNITS	81	7.6	N/A	10.60
LANDSCAPE LOTS	3	N/A	N/A	0.61
DRAINAGE/RETENTION	1	N/A	N/A	1.68
HEIGHT OR WAY	N/A	N/A	N/A	4.79
TOTAL	85			17.68

JONES CARTER
11111 West Loop West, Suite 1000, Dallas, Texas 75240
Tel: (214) 800-3636 Fax: (214) 800-3637
www.jonescarter.com

DATE: 12/11/2013
JOB NO.: 2013-0002
SCALE: 1"=60'
DRAWN BY: SPZ/JML
CHECKED BY: JEL
DWC NO.:
SERVED BY:
ISSUED BY:
PROJECT INFORMATION: TRAVESA SUBDIVISION

PRELIMINARY PLAN
TRAVESA SUBDIVISION



PRELIMINARY RESUBDIVISION APPROVAL
APPROVED BY THE CITY OF DALLAS
APPROVED BY THE CITY OF DALLAS
APPROVED BY THE CITY OF DALLAS
PROJECT INFORMATION: TRAVESA SUBDIVISION